



Park  
DISTRICT

T4 END - 1,993 SQ. FT.

THE WOODLAND COLLECTION

[ParkDistrictTowns.com](http://ParkDistrictTowns.com)

ICON  
HOMES

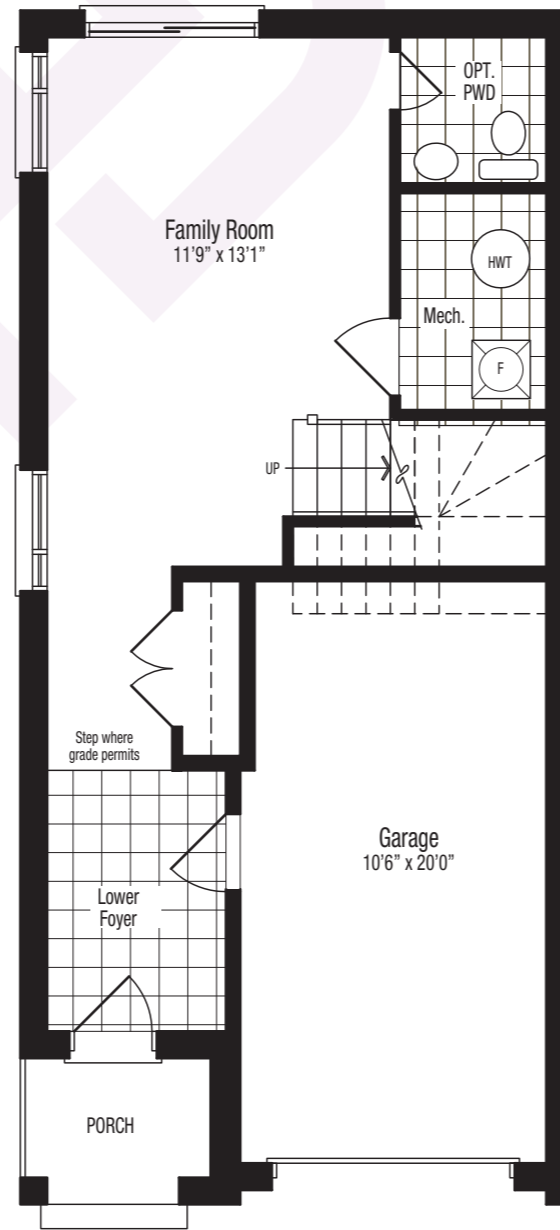


Park  
DISTRICT

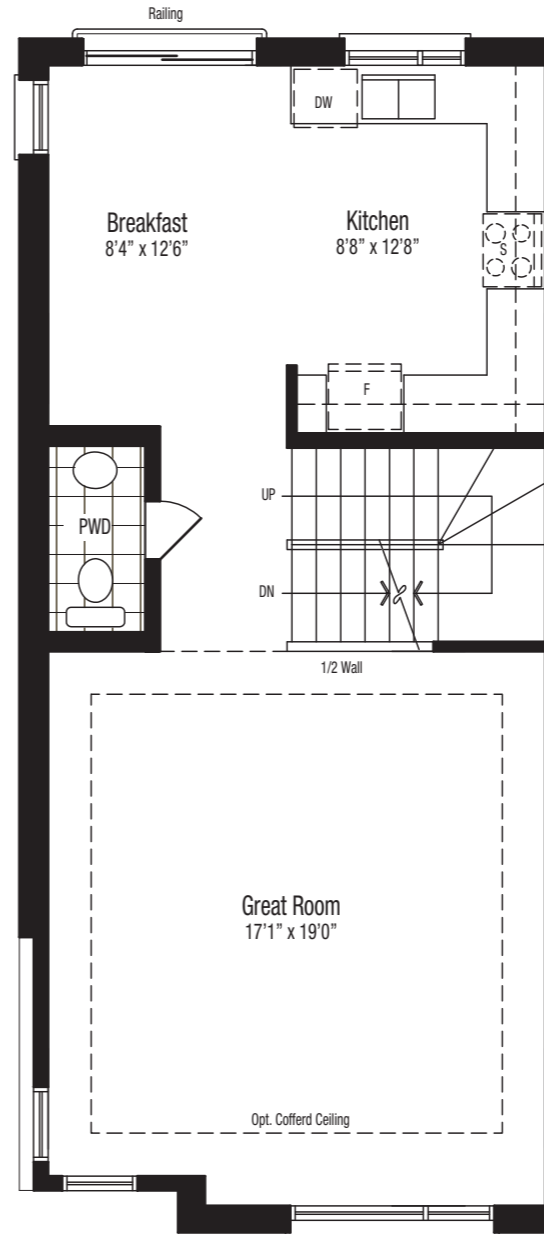
**T4 END - 1,993 SQ. FT.**  
3 Bedrooms  
2.5 Bathrooms



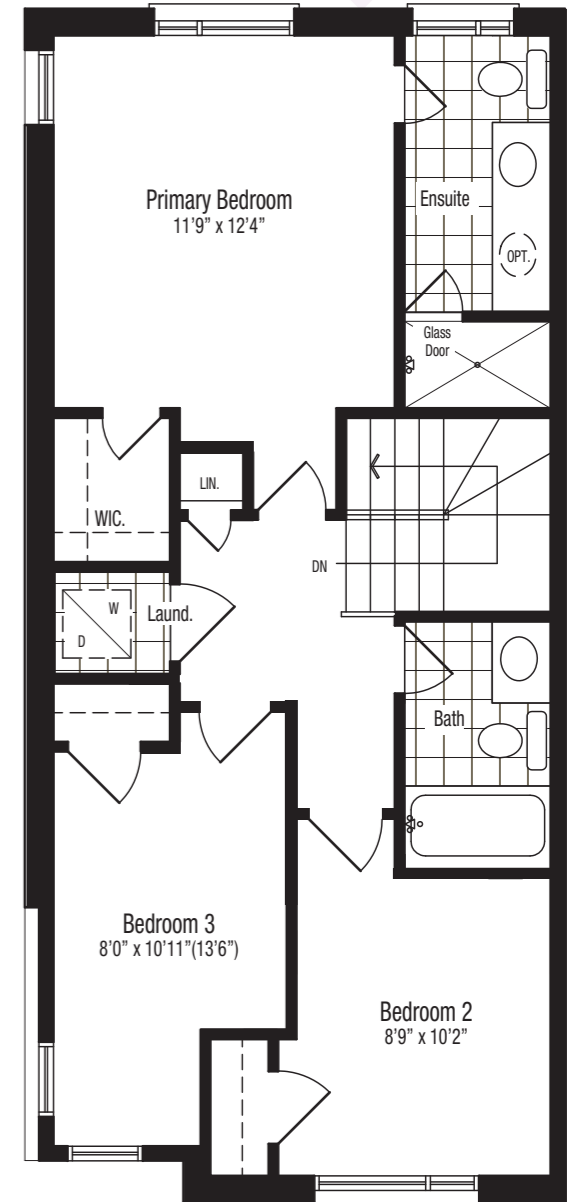
T4 END



LOWER FLOOR



MAIN FLOOR



UPPER FLOOR

Materials, specifications, and floor plans are subject to change without notice. All floor plans are approximate dimensions. Renderings are an artist's concept. Orientation of units may be reversed and the purchaser agrees to accept the same. Actual usable floor space may vary from the stated floor area. E & O. E. November 2021